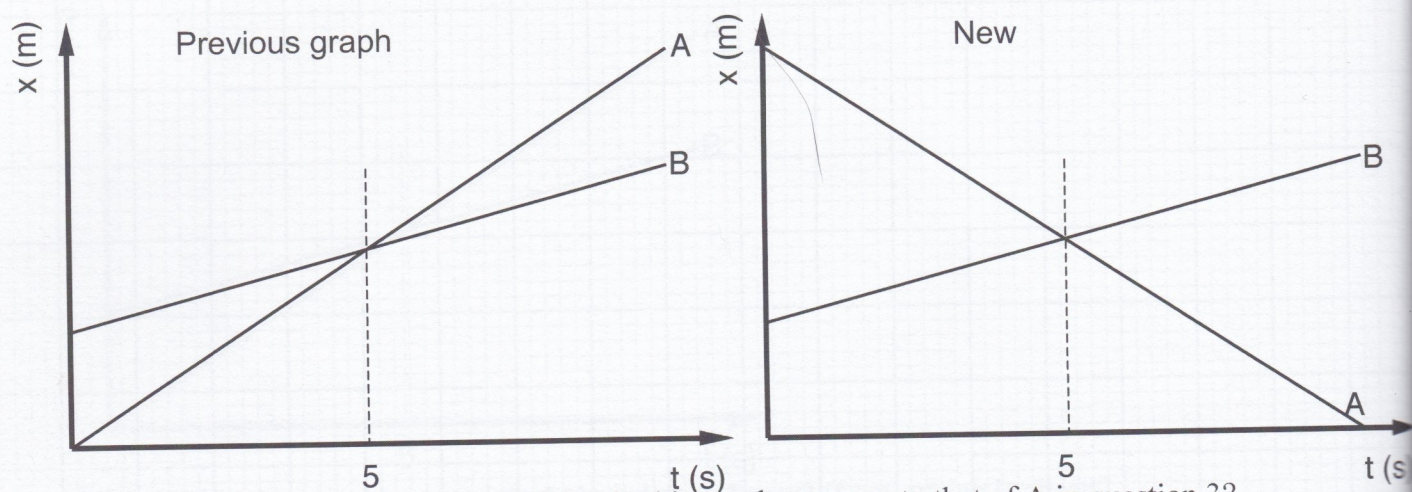


4. Consider the new position vs. time graph below for cyclists A and B.



a. How does the motion of the cyclist A in this graph compare to that of A in question 3?

b. How does the motion of cyclist B in this graph compare to that of B in question 3?

c. Which cyclist has the greater speed? How do you know?

d. Describe what is happening at the intersection of lines A and B.

e. Which cyclist has traveled further during the first 5 seconds? How do you know?

f. Draw a motion map for cyclists A and B.

